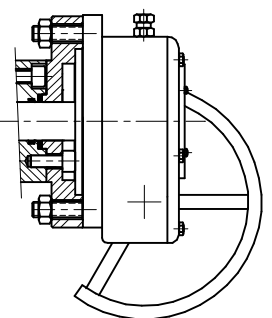


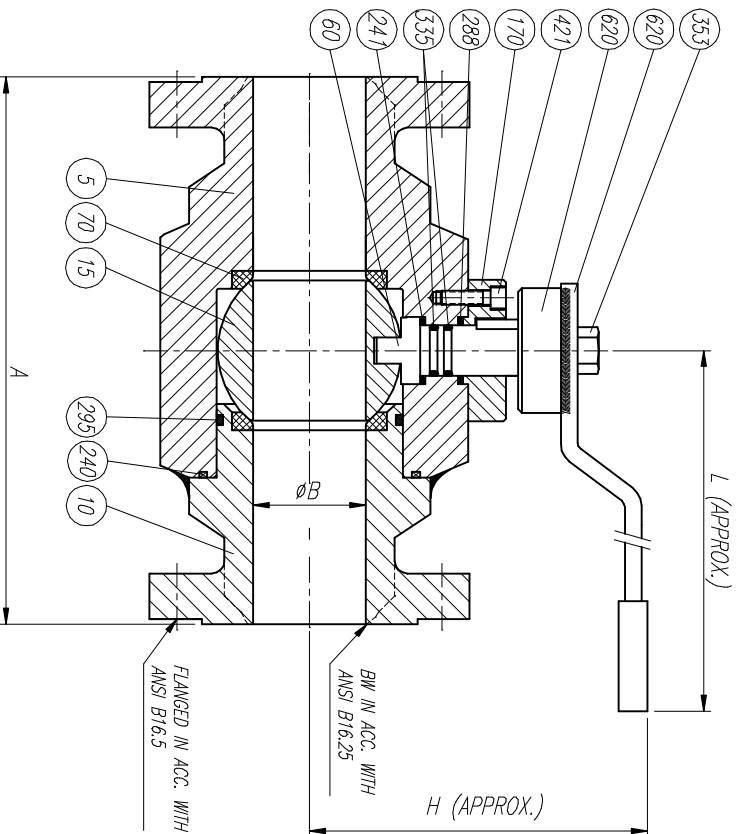
LIST OF MATERIALS

POS.	PART NAME	MATERIAL
5	BODY	A105
10	ADAPTOR	A105
15	BALL	A105 + ENP
60	SHAFT	A479 T410
70	SEAT	PTFE
170	SUPPORT FLANGE	A105
240	BODY ADAPTOR GASKET	GRAPHITE
241	STEM GASKET	GRAPHITE
288	UPPER FLANGE GASKET	GRAPHITE
295	BODY ADAPTOR O-RING	VITON
335	STEM "O" RING	VITON
353	HANDLE BOLT	A193 B7
421	SUPPORT FLANGE BOLT	A193 B7
610	HANDLE PLATE	CARBON STEEL
620	HANDLE	CARBON STEEL

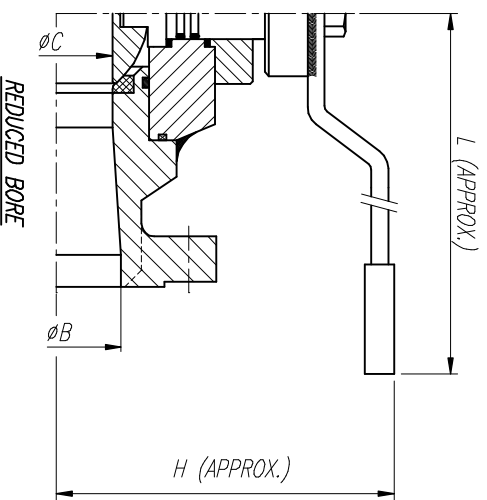
OTHERS MATERIALS AVAILABLE UPON REQUEST



ELECTRICAL AND PNEUMATIC OPERATION UPON REQUEST



SIZE	A				phi B	phi C	H	H1	L	WEIGHT
	BW	RF	RTU	RTU						
1/2"	140	140	151	11	—	73	—	150	7	
3/4"	152.5	152.5	165	20	11	75	73	180	9	
1"	165	165	178	25	20	78	75	180	11.5	
1 1/2"	190.5	190.5	203	38	25	100	78	280	19.5	
2"	216	216	231	51	38	136	100	280	29	
3"	283	283	298	76	51	165	136	380	45	
4"	305	305	320	102	76	195	165	480	81	
6"	457	403	419	152	102	250	195	GEAR 170	170	



REDUCED BORE

REV	Description	Drawn	Date	Appr	Date

		GENERAL ASSEMBLY & LIST OF MATERIALS	
RINGO VALVULAS		FLOATING BALL VALVE 300#	
Drawn	JLO	Date	20/12/03
Appr		Sheet	
Title:		Drawn	Date
Description:		Appr	Date
Detail:			
Gen Tol: ± 0.4			
Scale:			
Size: A3		Drawg No	BR03FS1
Sheet:		REV	0