

SAMSON

**SAMSON RINGO**

## Quality & experience

- ... And Safety and Health at Work
- ... And respect for the Environment
- ... And Social Corporate Responsibility



TO MAKE YOUR VISIT TO RINGO VALVULAS FACILITIES SAFER

PLEASE COMPLETE THE ENTRANCE RECORD AT THE END



**SAMSON**

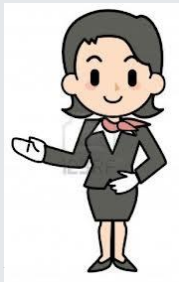
**SAMSON RINGO**

# Information for visitors and suppliers To access to Ringo Valvulas facilities



## IN RINGO VALVULAS FACILITIES:

- Follow the instructions from your colleague
- Cigarettes, Alcohol and Drugs are not allowed on site
- Take photos and videos are not permitted



## GENERAL RISKS:



1. Accident by forklift truck



2. Fall of suspended loads



3. Falls in same level

VALVE  
TESTING RISKS



1. Projection of splashes
2. Projection of particles

+

RISK TESTS  
CRYOGENIC  
VALVES



3. Choking hazards
4. Low temperature

WELDING  
WORKS RISKS



5. Ultraviolet radiations

## PREVENTIVE MEASURES:

1. Be careful with the traffic of forklift truck and the crane usage
2. To use the personal protective equipment
3. Do not carry out any task if you are not trained for it
4. Tend address the alarm signals given by the staff of RV

## PERSONAL PROTECTIVE EQUIPMENT

Compulsory use:



A. Visits without performing work

1. High visibility vest

B. Visits to witness tests

1. High visibility vest

2. Safety shoes

3. Safety glasses



C. Visits to witness welding works

1. Glasses ultraviolet radiation protection

D. Suppliers to perform own work

1. High visibility vest

2. Safety shoes

3. The mandatory for their activity

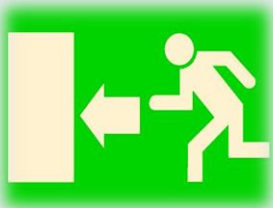




## EMERGENCIES

You have available the information needed in an emergency during your visit to RINGO VALVULAS facilities. Please, take the instructions at the reception desk.

# EMERGENCY



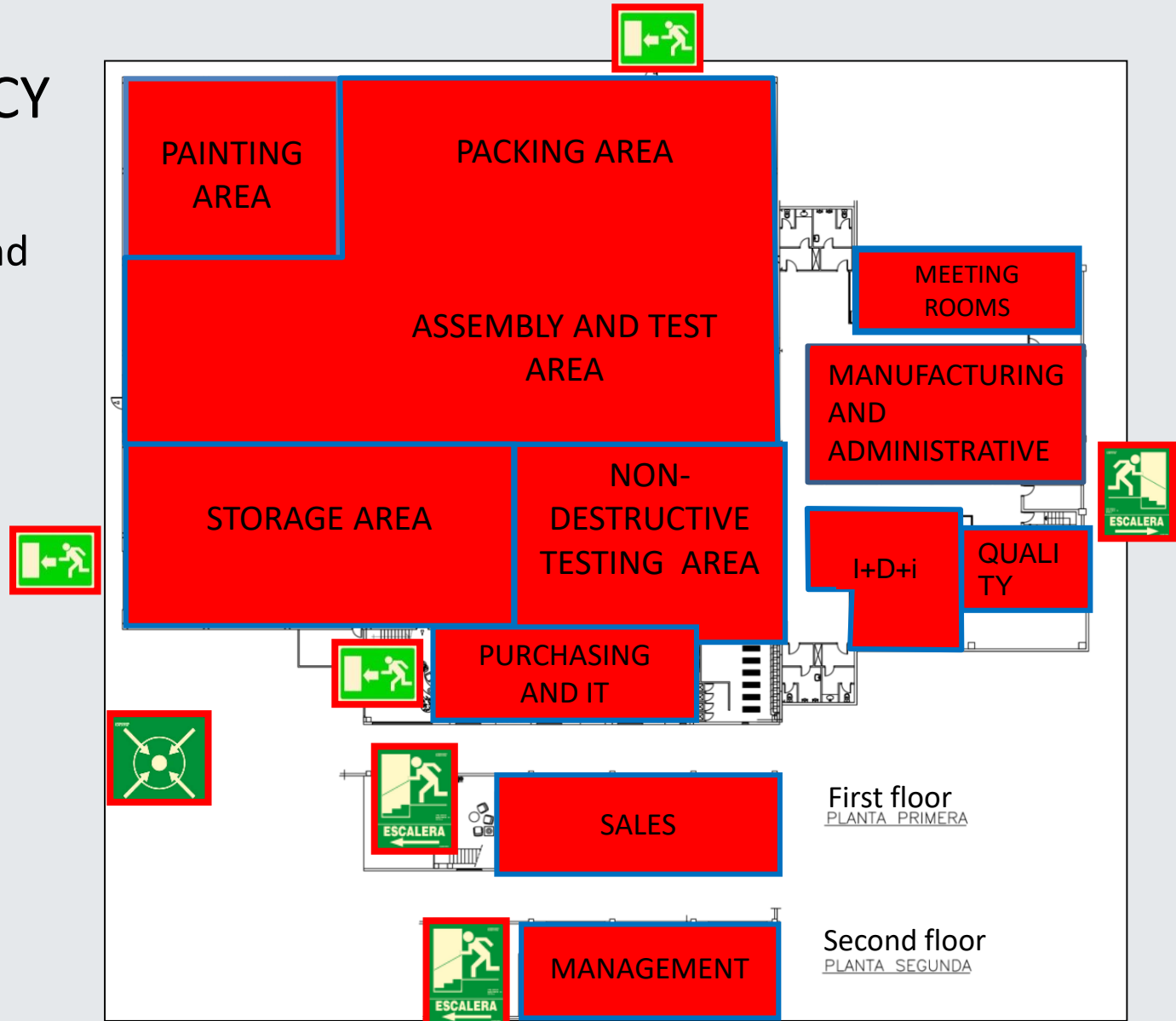
If you heard the emergency alarm, you must leave the facilities. If you are with a RV person, this one will help you to evacuate the building.



- To leave the building through emergency exits
- Not to run or push
- In case of going down stairs, please do it carefully and catch hold of the railing
- Go to the meeting point
- Not to come back until you have received the authorization

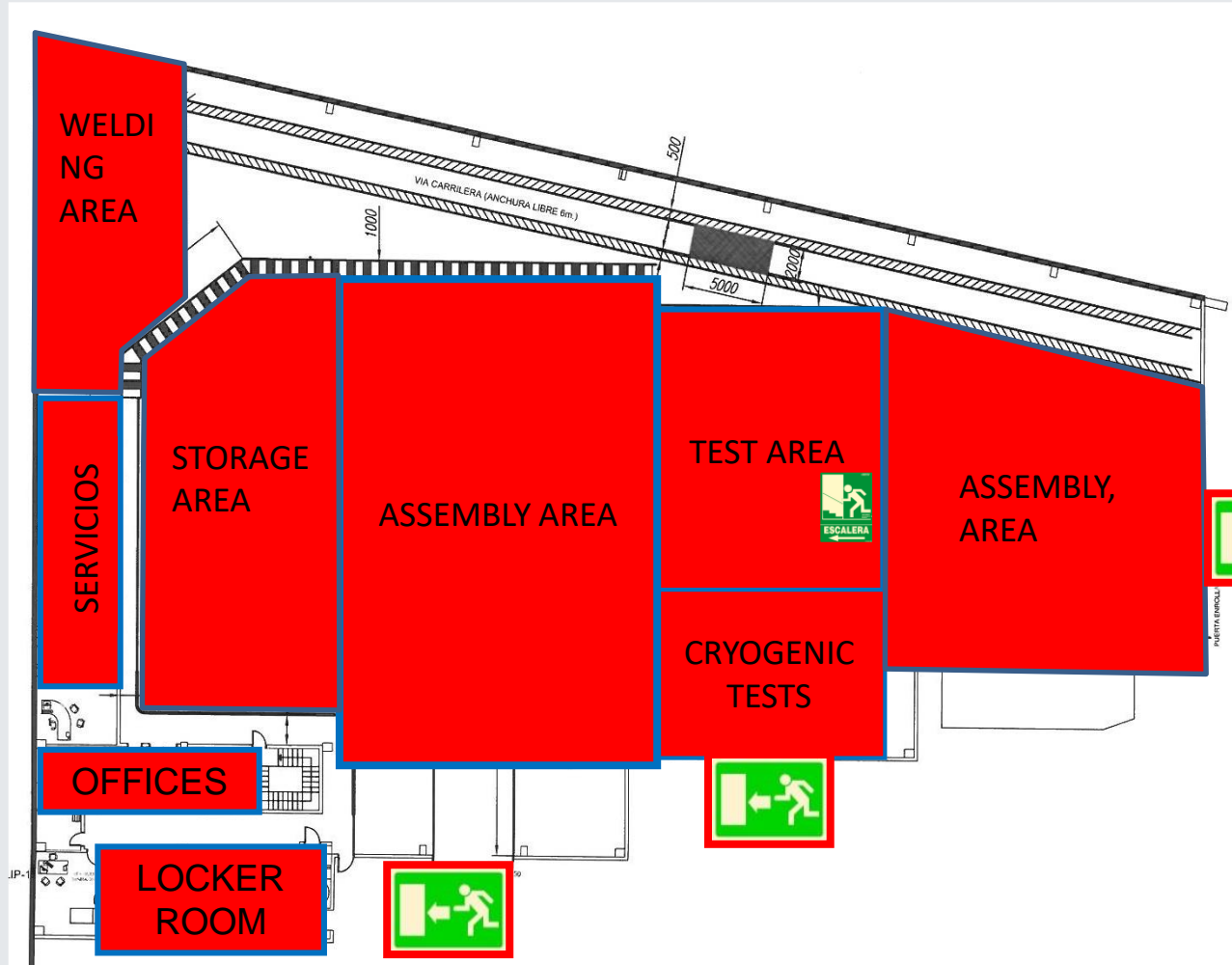
## EMERGENCY

Exits are in workshop 6 and offices



## EMERGENCY

Emergency exits  
workshop 2-4



## COORDINATION OF ACTIVITIES

If you are a supplier that comes to perform works in RV facilities, you must complete the exchange process of information to coordinate the activities. If you do not do it, you could not perform the works. You have to contact with HSE manager of RV.

## WASTES MANAGEMENT

Wastes generated in the activities must be managed properly.

If you are going to create wastes during your activity, you must separate and put them in the containers situated on the facilities.

If there is no possibility to manage the wastes created by you in RV, you must carry the wastes with you.

**THANK YOU  
FOR YOUR ATTENTION**

