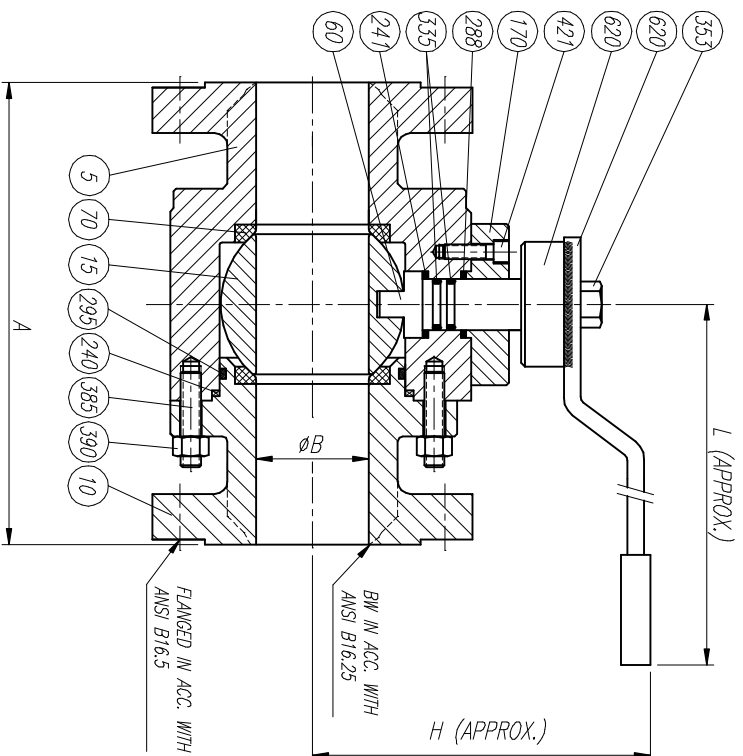
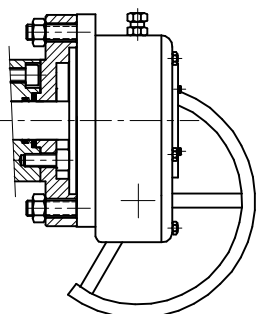


**LIST OF MATERIALS**

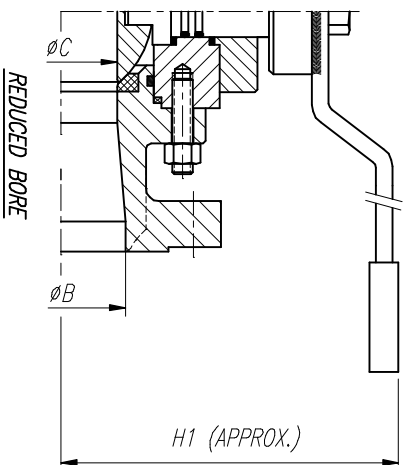
POS.	PART NAME	MATERIAL
5	BODY	A105
10	ADAPTOR	A105
15	BALL	A105 + ENP
60	SHAFT	A479 T410
70	SEAT	PTFE
170	SUPPORT FLANGE	A105
240	BODY ADAPTOR GASKET	GRAPHITE
241	STEM GASKET	GRAPHITE
288	UPPER FLANGE GASKET	GRAPHITE
295	BODY ADAPTOR O-RING	VITON
335	STEM "O" RING	VITON
353	HANDLE BOLT	A193 B7
385	BODY ADAPTOR STUD	A193 B7
390	BODY ADAPTOR STUD NUT	A194 2H
421	SUPPORT FLANGE BOLT	A193 B7
610	HANDLE PLATE	CARBON STEEL
620	HANDLE	CARBON STEEL

OTHERS MATERIALS AVAILABLE UPON REQUEST

ELECTRICAL AND PNEUMATIC OPERATION UPON REQUEST



SIZE	A				ØB	ØC	H	H1	L	WEIGHT
	BW	RF	RTU	RTU						
1/2"	140	108	—	11	—	73	—	150	4	
3/4"	152.5	117	—	20	11	75	73	180	6	
1"	165	127	140	25	20	78	75	180	7	
1 1/2"	190.5	165	178	38	25	100	78	280	15	
2"	216	178	190.5	51	38	136	100	280	25	
3"	283	203	216	76	51	165	136	380	40	
4"	305	229	241	102	76	195	165	480	77	
6"	457	394	406	152	102	250	195	480	135	
8"	521	457	470	203	152	280	250	GEAR	195	



REV	Description	Drawn	Date	Appr	Date

	<b>DETAIL</b> Description: <b>GENERAL ASSEMBLY &amp; LIST OF MATERIALS</b> Title: <b>FLOATING BALL VALVE 150#</b>
Drawn: JLO Date: 20/12/03 Sheet: 1 of 1	Scale: 1:1 Size: A3 Drawg No: <b>BR01FA1</b> REV: 0