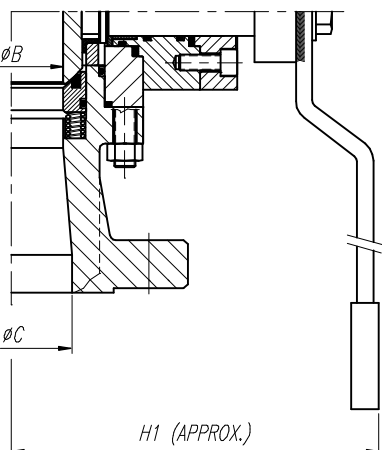


ELECTRICAL AND PNEUMATIC OPERATION UPON REQUEST



REDUCED BORE

LIST OF MATERIALS

POS.	PART NAME	MATERIAL
5	BODY	A105
10	ADAPTOR	A105
15	BALL	A105 + ENP
35	UPPER BODY BONNET	A105
60	SHAFT	A479 T410
70	SEAT	PTFE
75	SEAT CARRIER	A105 + ENP
100	BALL GUIDE	A105
170	SUPPORT FLANGE	A105
190	UPPER BEARING	DU-DRY
200	UPPER BEARING BALL GUIDE	DU-DRY
238	SUPPORT FLANGE GASKET	GRAPHITE
240	BODY ADAPTOR GASKET	GRAPHITE
287	UPPER BONNET GASKET	GRAPHITE
300	ADAPTOR "O" RING	VITON
315	UPPER BONNET "O" RING	VITON
325	SEAT CARRIER "O" RING	VITON
335	STEM "O" RING	VITON
353	HANDLE BOLT	CARBON STEEL
385	BODY ADAPTOR STUD	A193 B7
390	BODY ADAPTOR STUD NUT	A194 2H
421	SUPPORT FLANGE BOLT	A193 B7
445	UPPER BONNET BOLT	CARBON STEEL
558	THRUST BEARING	DU-DRY
565	WASHER	CARBON STEEL
580	SEAT SPRING	INCONEL X750
610	HANDLE PLATE	CARBON STEEL
620	HANDLE	CARBON STEEL

OTHERS MATERIALS AVAILABLE UPON REQUEST

SIZE	A					WEIGHT					
	BW	RF	RTU	ØB	ØC	H	H1	L	GEAR	FL. BORE	REDUCED BORE
1 1/2"	190	190	203	38	—	105	—	250	—	20	—
2"	216	216	232	51	38	125	105	280	32	29	29
3"	283	283	298	76	51	150	125	380	44	38	38
4"	305	305	321	102	76	190	150	480	66	54	54
6"	457	403	419	152	102	240	190	480	175	108	108
8"	521	502	517	203	152	425	240	GEAR	255	237	237
10"	559	568	584	254	203	550	425	GEAR	530	430	430
12"	635	648	664	305	254	690	550	GEAR	748	627	627
14"	762	762	778	337	305	775	690	GEAR	1056	842	842
16"	838	838	854	387	337	830	775	GEAR	1375	1155	1155
18"	914	914	930	438	387	900	830	GEAR	1705	1475	1475
20"	991	991	1010	489	438	990	900	GEAR	2420	1795	1795
24"	1143	1143	1165	590	489	1070	990	GEAR	3850	2795	2795
26"	1245	1245	—	635	590	1170	1170	GEAR	4390	4015	4015
28"	1346	1346	—	686	635	1225	1170	GEAR	4950	4510	4510
30"	1397	1397	—	737	686	1290	1225	GEAR	5390	5060	5060

SIZE	A					WEIGHT					
	BW	RF	RTU	ØB	ØC	H	H1	L	GEAR	FL. BORE	REDUCED BORE
32"	1524	1524	—	781	737	1350	1290	GEAR	6020	5693	5693
34"	1626	1626	—	832	781	1430	1350	GEAR	6700	6270	6270
36"	1727	1727	—	876	832	1490	1430	GEAR	7920	7040	7040
40"	1905	1905	—	978	876	1590	1490	GEAR	9020	7700	7700
42"	1930	1930	—	1022	978	1660	1590	GEAR	9900	8515	8515

REV		Description		Title	
Drawn		Date		Scale	
Appr		Date		Scale	

ESPMA
RINGO VALVULAS
 GENERAL ASSEMBLY
 & LIST OF MATERIALS

Detail: **BALL VALVE 300#**
 Gen Tol ± 0.4
 Scale: **A3**
 Drawg No: **BR0341**
 REV: **0**