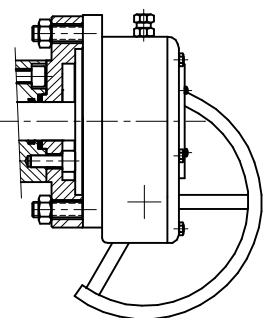


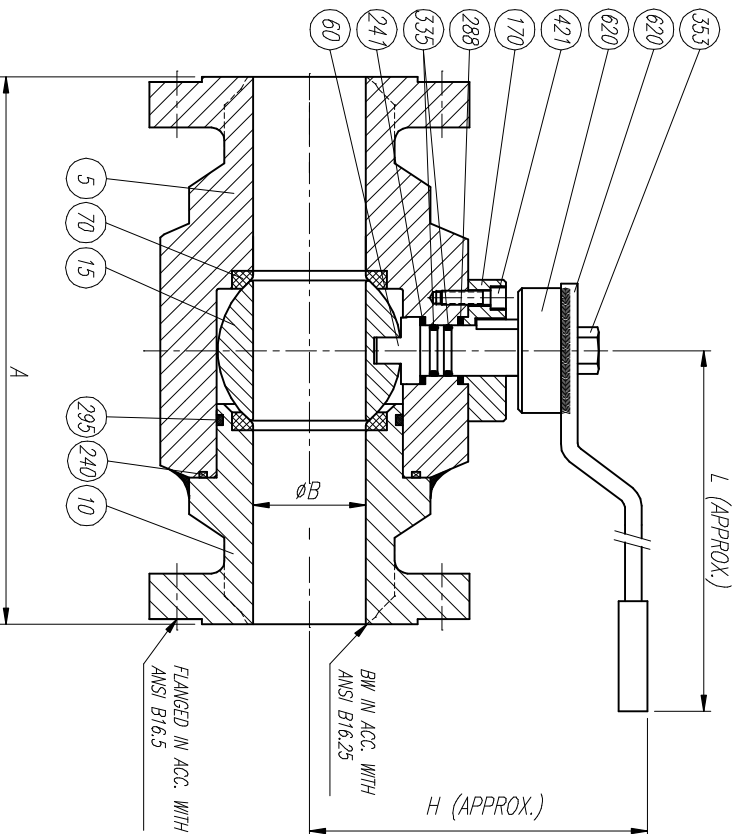
LIST OF MATERIALS

POS.	PART NAME	MATERIAL
5	BODY	A105
10	ADAPTOR	A105
15	BALL	A105 + ENP
60	SHAFT	A479 T410
70	SEAT	PTFE
170	SUPPORT FLANGE	A105
240	BODY ADAPTOR GASKET	GRAPHITE
241	STEM GASKET	GRAPHITE
288	UPPER FLANGE GASKET	GRAPHITE
295	BODY ADAPTOR O-RING	VITON
335	STEM "O" RING	VITON
353	HANDLE BOLT	A193 B7
421	SUPPORT FLANGE BOLT	A193 B7
610	HANDLE PLATE	CARBON STEEL
620	HANDLE	CARBON STEEL

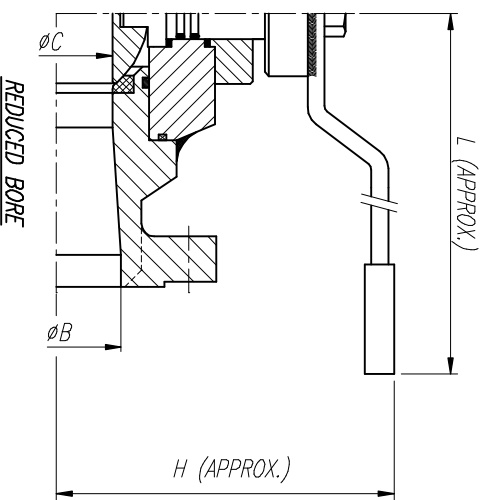
OTHERS MATERIALS AVAILABLE UPON REQUEST



ELECTRICAL AND PNEUMATIC OPERATION UPON REQUEST



SIZE	A				ϕB	ϕC	H	H1	L	WEIGHT
	BW	RF	RTU	RTJ						
1/2"	165	165	163.5	11	—	73	—	150	10	
3/4"	190.5	190.5	190.5	20	11	75	73	180	12	
1"	216	216	216	25	20	78	75	180	15	
1 1/2"	241	241	241	38	25	100	78	280	25	
2"	292	292	295	51	38	136	100	280	40	
3"	355	355	358	76	51	165	136	380	60	
4"	432	432	435	102	76	195	165	GEAR	100	



REV	Description	Detail	Drawn	Date	Appr	Date

	ESPAM GENERAL ASSEMBLY & LIST OF MATERIALS	Title: FLOATING BALL VALVE 600#	Drawn	Date	Scale	Size	Drawg No	REV
			JLO	20/12/03	Gen Tol ± 0.4	A3	BR06F51	0