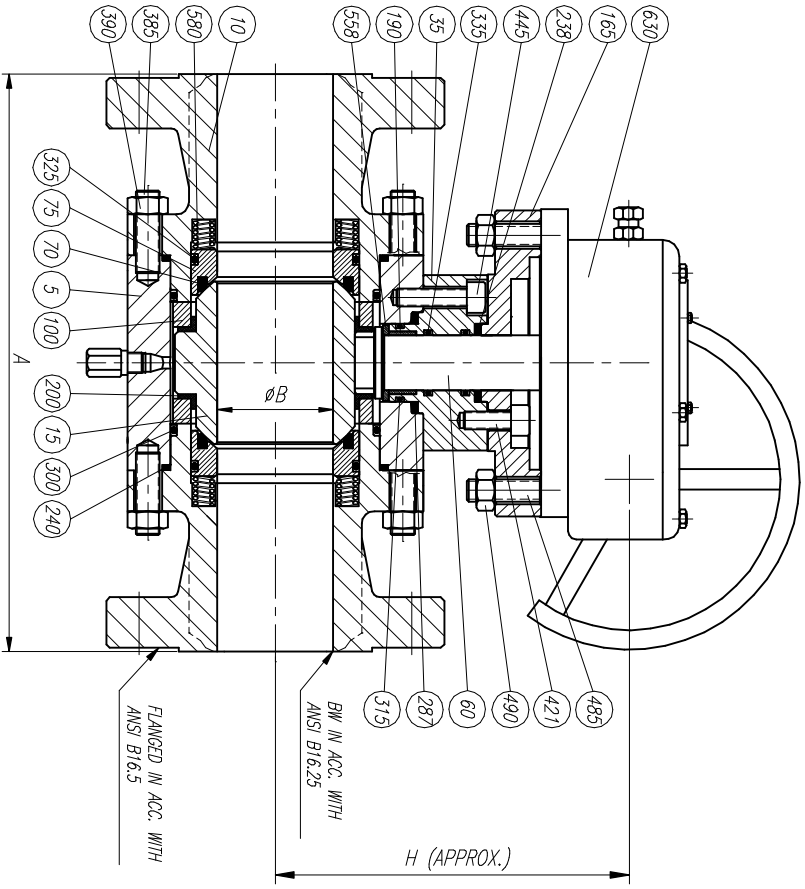
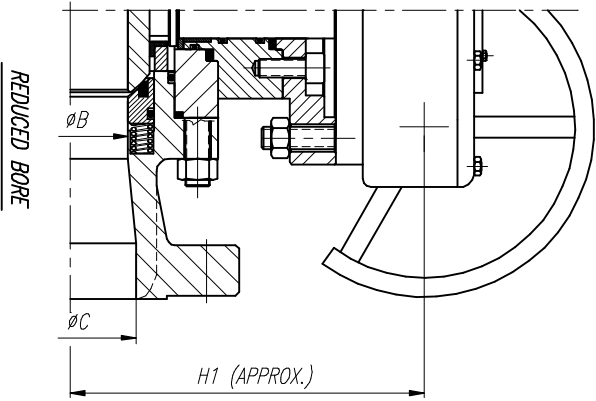


ELECTRICAL AND PNEUMATIC  
OPERATION UPON REQUEST

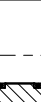


LIST OF MATERIALS

POS.	PART NAME	MATERIAL
5	BODY	A105
10	ADAPTOR	A105
15	BALL	A105 + ENP
35	UPPER BODY BONNET	A105
60	SHAFT	A479 T410
70	SEAT	PTFE
75	SEAT CARRIER	A105 + ENP
100	BALL GUIDE	A105
165	SUPPORT FLANGE	A105
190	UPPER BEARING	DU-DRY
200	BEARING BALL GUIDE	DU-DRY
238	SUPPORT FLANGE GASKET	GRAPHITE
240	BODY ADAPTOR GASKET	GRAPHITE
287	UPPER BONNET GASKET	GRAPHITE
300	ADAPTOR "O" RING	WITON
315	UPPER BONNET "O" RING	WITON
325	SEAT CARRIER "O" RING	WITON
335	STEM "O" RING	WITON
385	BODY ADAPTOR STUD	A193 B7
390	BODY ADAPTOR STUD NUT	A194 2H
421	SUPPORT FLANGE BOLT	A193 B7
445	UPPER BONNET BOLT	CARBON STEEL
485	ACTUATOR STUD	CARBON STEEL
490	ACTUATOR STUD NUT	CARBON STEEL
558	THRUST BEARING	DU-DRY
580	SEAT SPRING	INCONEL X750
630	ACTUATOR	COMMERCIAL

OTHERS MATERIALS AVAILABLE UPON REQUEST

SIZE	A				WEIGHT		
	BW-RF	RTU	ØB	ØC	H	H1	FULL BORE REDUCED BORE
2"	368	371	51	—	180	—	51
3"	381	384	76	51	330	180	76
4"	457	460	102	76	520	330	142
6"	610	613	152	102	590	520	358
8"	737	740	203	152	690	590	627
10"	838	841	254	203	815	690	1062
12"	965	968	305	254	850	815	1617
14"	1029	1038	324	305	985	850	2124
16"	1130	1140	375	324	1170	985	2712
18"	1219	1232	425	375	1210	1170	3542
20"	1321	1334	473	425	1295	1210	4252
24"	1549	1568	571	473	1340	1295	6655
26"	1676	—	619	571	1395	1340	7492
28"	1803	—	673	619	1460	1395	9515
30"	1905	—	714	673	1520	1460	11588
32"	2032	—	762	714	1590	1520	13865
34"	2159	—	810	762	1665	1590	15790

REV		Description		Detail		Title	
Drawn	JLO	Date	12/12/03	Gen Tol. ± 0.4	Scale	Size	A3
 <b>RINGCO VALVULAS</b> GENERAL ASSEMBLY & LIST OF MATERIALS				BALL VALVE 900#			
Appr		Sheet				Drawg No	BR09A16
							REV
							0