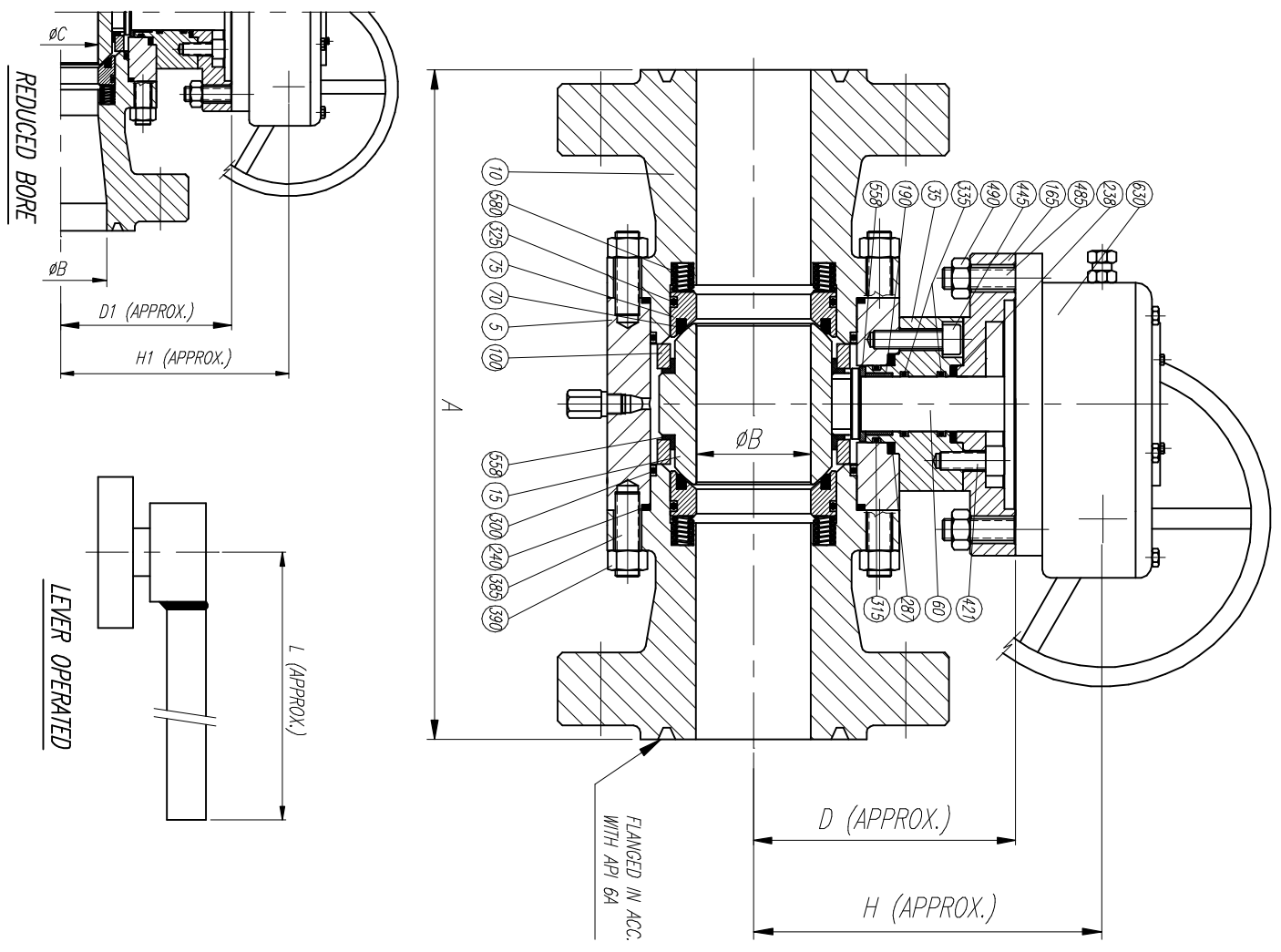


LIST OF MATERIALS

Nº	Description	Material
5	BODY	A105
10	ADAPTOR	A105
15	BALL	A105 + ENP
35	UPPER BONNET	A105
60	STEM	A182 F6
70	SEAL	NYLON
75	SEAT CARRIER	A105 + ENP
100	BALL GUIDE	A105
165	SUPPORT FLANGE	A105
190	UPPER BEARING	DU-DRY
238	SUPPORT FLANGE GASKET	GRAPHITE
240	BODY ADAPTOR GASKET	GRAPHITE
287	UPPER BONNET GASKET	GRAPHITE
300	ADAPTOR "O" RING	VITON
315	UPPER BONNET "O" RING	VITON
325	SEAT CARRIER "O" RING	VITON
335	STEM "O" RING	VITON
385	BODY ADAPTOR STUD	A193 B7
390	BODY ADAPTOR STUD NUT	A194 2H
421	SUPPORT FLANGE BOLT	A193 B7
445	UPPER BONNET BOLT	A193 B7
485	ACTUATOR STUD	CARBON STEEL
490	ACTUATOR STUD NUT	CARBON STEEL
588	THRUST BEARING	DU-DRY
580	SEAT SPRING	INCONEL X750
630	ACTUATOR	COMMERCIAL

OTHERS MATERIALS AVAILABLE UPON REQUEST



SIZE	A-RTU	ØB	ØC	H	H1	ØM	WEIGHT
2 1/16"x1 13/16"	521	52,4	46	—	198	300	110
2 1/16"	521	52,4	—	245	—	700	170
3 1/16"x2 1/16"	619	78	52,4	—	245	700	240
3 1/16"	619	78	—	280	—	700	330
4 1/16"x3 1/16"	670	103,2	78	—	280	700	370
4 1/16"	670	103,2	—	365	—	700	430
5 1/8"x4 1/16"	737	130	103,2	—	365	700	510

REV		Description		Detail		Title	
Drawn	JUD	Date	23/01/04	Gen Tol ± 0,4	Scale	Size	A3
Appr		Date	23/01/04	Sheet 1 / 1	Scale	Size	A3
				GENERAL ASSEMBLY & LIST OF MATERIALS			
				BALL VALVE 10000# API 6A			
				Dwg No BR100A2G			
				REV 0			