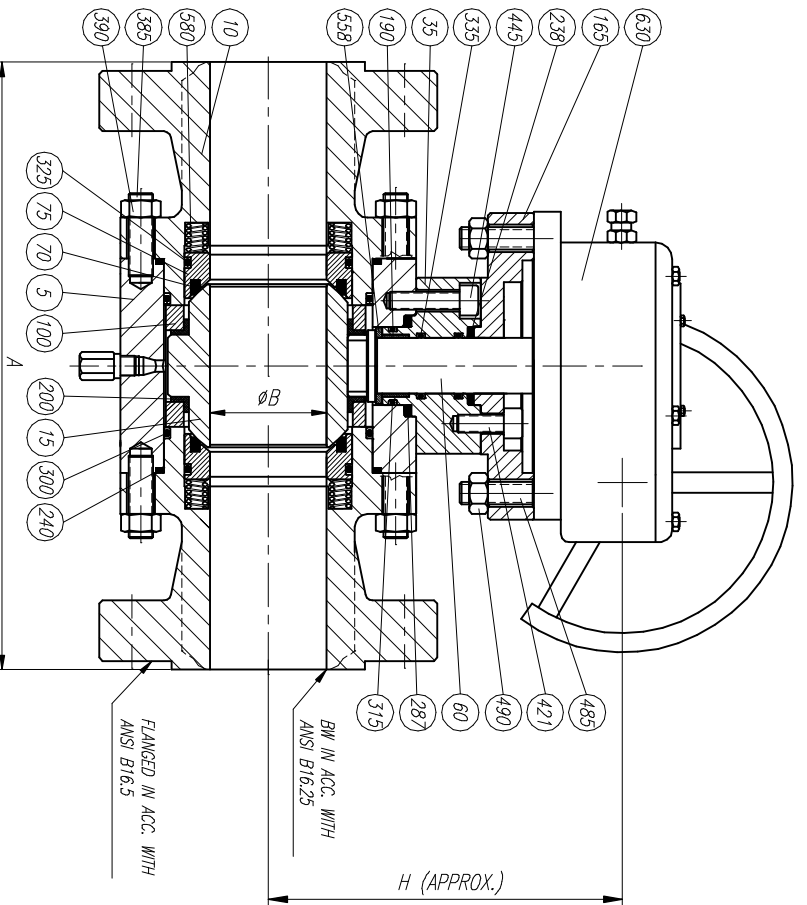
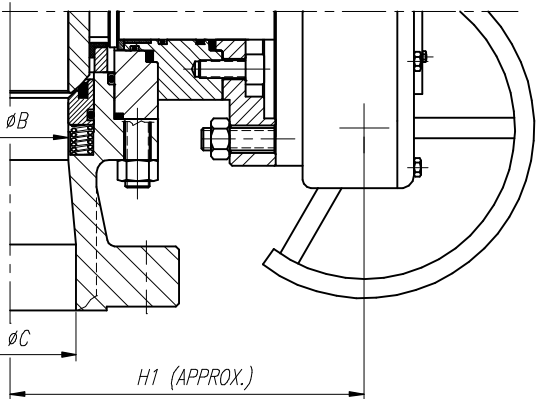


ELECTRICAL AND PNEUMATIC
OPERATION UPON REQUEST



SIZE	A				WEIGHT			
	BW-RF	RTJ	ϕB	ϕC	H	H1	FULL BORE	REDUCED BORE
3"	470	473	76	51	390	340	105	77
4"	546	549	102	76	490	390	210	121
6"	705	711	146	102	740	490	545	308
8"	832	841	194	146	810	740	946	660
10"	991	1000	241	194	860	810	1660	1430
12"	1130	1146	289	241	930	860	2530	1980
14"	1257	—	317	289	1000	930	3190	2585
16"	1384	—	362	317	1075	1000	4015	3300
18"	1537	—	—	362	1190	1075	5170	4400
20"	1664	—	—	—	1245	1190	5665	5060
24"	1943	—	—	—	1360	1245	8690	7480

LIST OF MATERIALS

POS.	PART NAME	MATERIAL
5	BODY	A105
10	ADAPTOR	A105
15	BALL	A105 + ENP
35	UPPER BODY BONNET	A105
60	SHAFT	A479 T410
70	SEAT	PTFE
75	SEAT CARRIER	A105 + ENP
100	BALL GUIDE	A105
165	SUPPORT FLANGE	A105
190	UPPER BEARING	DU-DRY
200	BEARING BALL GUIDE	DU-DRY
238	SUPPORT FLANGE GASKET	GRAPHITE
240	BODY ADAPTOR GASKET	GRAPHITE
287	UPPER BONNET GASKET	GRAPHITE
300	ADAPTOR "O" RING	VITON
315	UPPER BONNET "O" RING	VITON
325	SEAT CARRIER "O" RING	VITON
335	STEM "O" RING	VITON
385	BODY ADAPTOR STUD	A193 B7
390	BODY ADAPTOR STUD NUT	A194 2H
421	SUPPORT FLANGE BOLT	A193 B7
445	UPPER BONNET BOLT	CARBON STEEL
485	ACTUATOR STUD	CARBON STEEL
490	ACTUATOR STUD NUT	CARBON STEEL
558	THRUST BEARING	DU-DRY
580	SEAT SPRING	INCONEL X750
630	ACTUATOR	COMMERCIAL

OTHERS MATERIALS AVAILABLE UPON REQUEST

REV	Description	Drawn	Date	Appr	Date

REV	Date	Appr	Date

Drawn	JLO	Date	12/12/03	Scale	A3	Drawg No	BRISAIG	REV	0
Appr			12/12/03						

Description		Detail	
RINGO VALVULAS		GENERAL ASSEMBLY & LIST OF MATERIALS	
Title:		BALL VALVE 1500#	