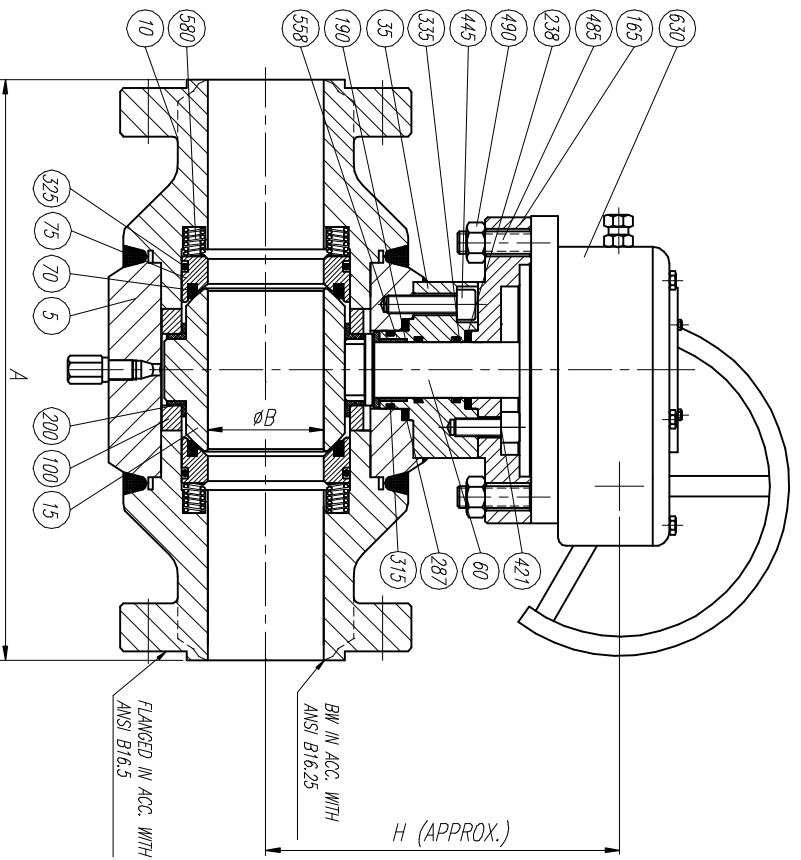
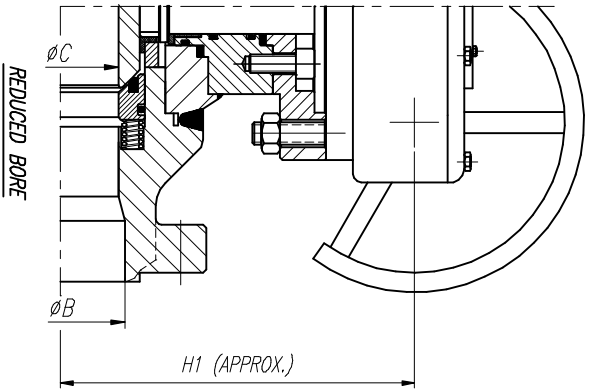


ELECTRICAL AND PNEUMATIC  
OPERATION UPON REQUEST



SIZE	A					WEIGHT		
	BW-RF	RTU	$\phi B$	$\phi C$	H	H1	FULL BORE REDUCED BORE	
3"	470	473	76	51	390	340	95	70
4"	546	549	102	76	490	390	190	110
6"	705	711	146	102	740	490	495	280
8"	832	841	194	146	810	740	860	600
10"	991	1000	241	194	860	810	1510	1300
12"	1130	1146	289	241	930	860	2300	1800
14"	1257	—	317	289	1000	930	2900	2350
16"	1384	—	362	317	1075	1000	3650	3000
18"	1537	—	—	362	1190	1075	4700	4000
20"	1664	—	—	—	1245	1190	5150	4600
24"	1943	—	—	—	1360	1245	7900	6800

LIST OF MATERIALS

POS.	PART NAME	MATERIAL
5	BODY	A105
10	ADAPTOR	A105
15	BALL	A105 + ENP
35	UPPER BODY BONNET	A105
60	SHAFT	4479 T410
70	SEAT	PTFE
75	SEAT CARRIER	A105 + ENP
100	BALL GUIDE	A105
165	SUPPORT FLANGE	A105
190	UPPER BEARING	DU-DRY
200	UPPER BEARING BALL GUIDE	DU-DRY
238	SUPPORT FLANGE GASKET	GRAPHITE
287	UPPER BONNET GASKET	GRAPHITE
315	UPPER BONNET "O" RING	WITON
325	SEAT CARRIER "O" RING	WITON
335	STEM "O" RING	WITON
421	SUPPORT FLANGE BOLT	A193 B7
445	UPPER BONNET BOLT	CARBON STEEL
485	ACTUATOR STUD	CARBON STEEL
490	SUPPORT FLANGE BOLT	A193 2H
558	THRUST BEARING	DU-DRY
580	SEAT SPRING	INCONEL X750
630	ACTUATOR	COMMERCIAL

OTHERS MATERIALS AVAILABLE UPON REQUEST

REV	Description	Drawn	Date	Appr	Date

	<b>RINGCO VALVULAS</b> GENERAL ASSEMBLY & LIST OF MATERIALS	Detail Title: BALL VALVE 1500#	Drawn	Date	Appr	Date
			JLO 11/12/03 11/12/03 Sheet	Scale A3	Size A3	Drawg No BR1551G