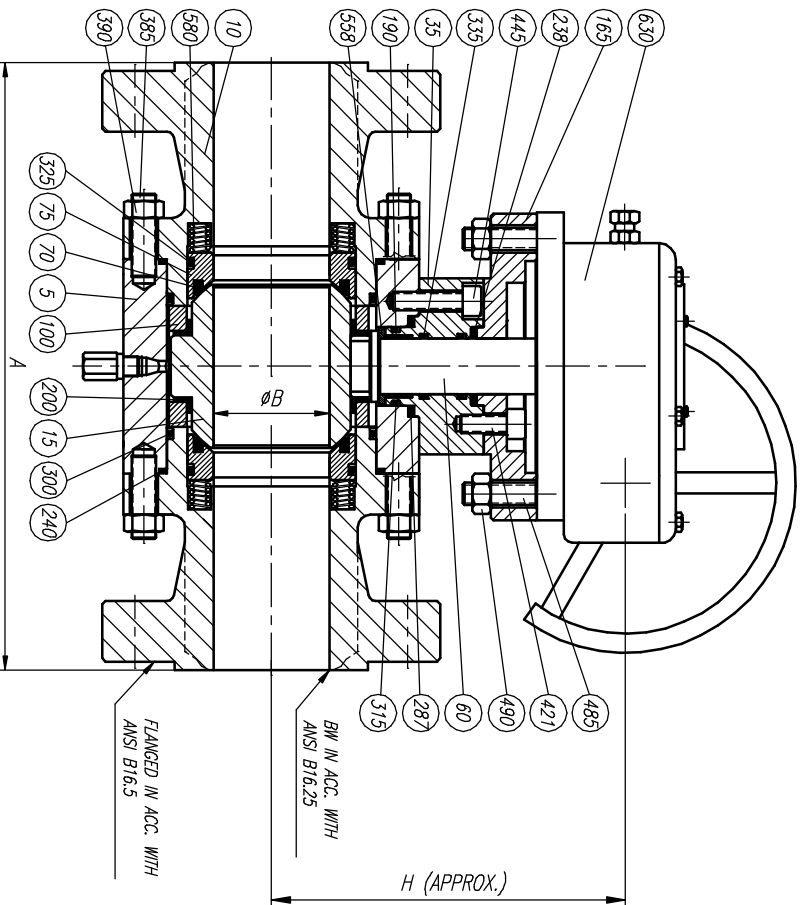
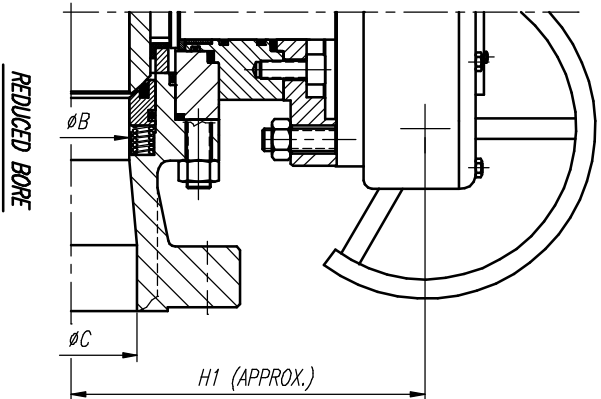


ELECTRICAL AND PNEUMATIC
OPERATION UPON REQUEST



LIST OF MATERIALS

POS.	PART NAME	MATERIAL
5	BODY	A105
10	ADAPTOR	A105
15	BALL	A105 + ENP
35	UPPER BODY BONNET	A105
60	SHAFT	A479 T410
70	SEAT	PTFE
75	SEAT CARRIER	A105 + ENP
100	BALL GUIDE	A105
165	SUPPORT FLANGE	A105
190	UPPER BEARING	DU-DRY
200	BEARING BALL GUIDE	DU-DRY
238	SUPPORT FLANGE GASKET	GRAPHITE
240	BODY ADAPTOR GASKET	GRAPHITE
287	UPPER BONNET GASKET	GRAPHITE
300	ADAPTOR "O" RING	VITON
315	UPPER BONNET "O" RING	VITON
325	SEAT CARRIER "O" RING	VITON
335	STEM "O" RING	VITON
385	BODY ADAPTOR STUD	A193 B7
390	BODY ADAPTOR STUD NUT	A194 2H
421	SUPPORT FLANGE BOLT	A193 B7
445	UPPER BONNET BOLT	CARBON STEEL
485	ACTUATOR STUD	CARBON STEEL
490	ACTUATOR STUD NUT	CARBON STEEL
558	THRUST BEARING	DU-DRY
580	SEAT SPRING	INCONEL X750
630	ACTUATOR	COMMERCIAL

OTHERS MATERIALS AVAILABLE UPON REQUEST

SIZE	A				WEIGHT			
	BW-RF	RTU	ØB	ØC	H	H1		
3"	578	584	63.5	44.5	415	360	220	165
4"	673	683	89	63.5	530	415	385	275
6"	914	927	133	89	765	530	880	550
8"	1022	1038	181	133	850	765	1540	1235
10"	1270	1292	225	181	920	850	2420	1895
12"	1422	1445	267	225	995	920	3640	2880
14"	1676	—	—	—	1075	995	4290	3410
16"	1778	—	—	—	1160	1075	6435	5170

REV	Description	Detail	Drawn	Date	Scale	Size	Drawg No	REV

Drawn	JLO	Date	12/12/03	Gen Tol ± 0.4	Scale	A3	Drawg No	BR25A16	REV	0
Appr										

		GENERAL ASSEMBLY & LIST OF MATERIALS		BALL VALVE 2500#	
--	--	---	--	-------------------------	--