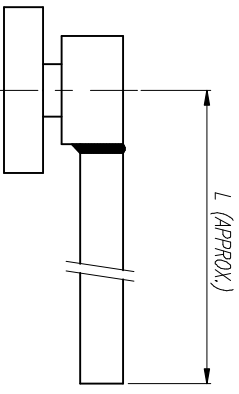
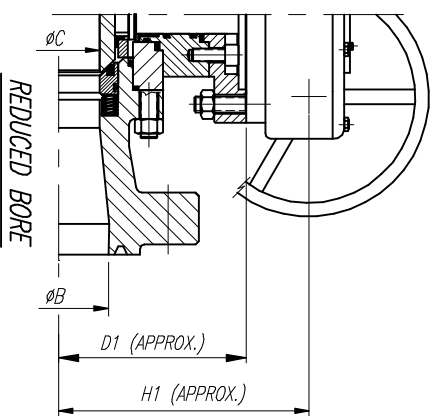
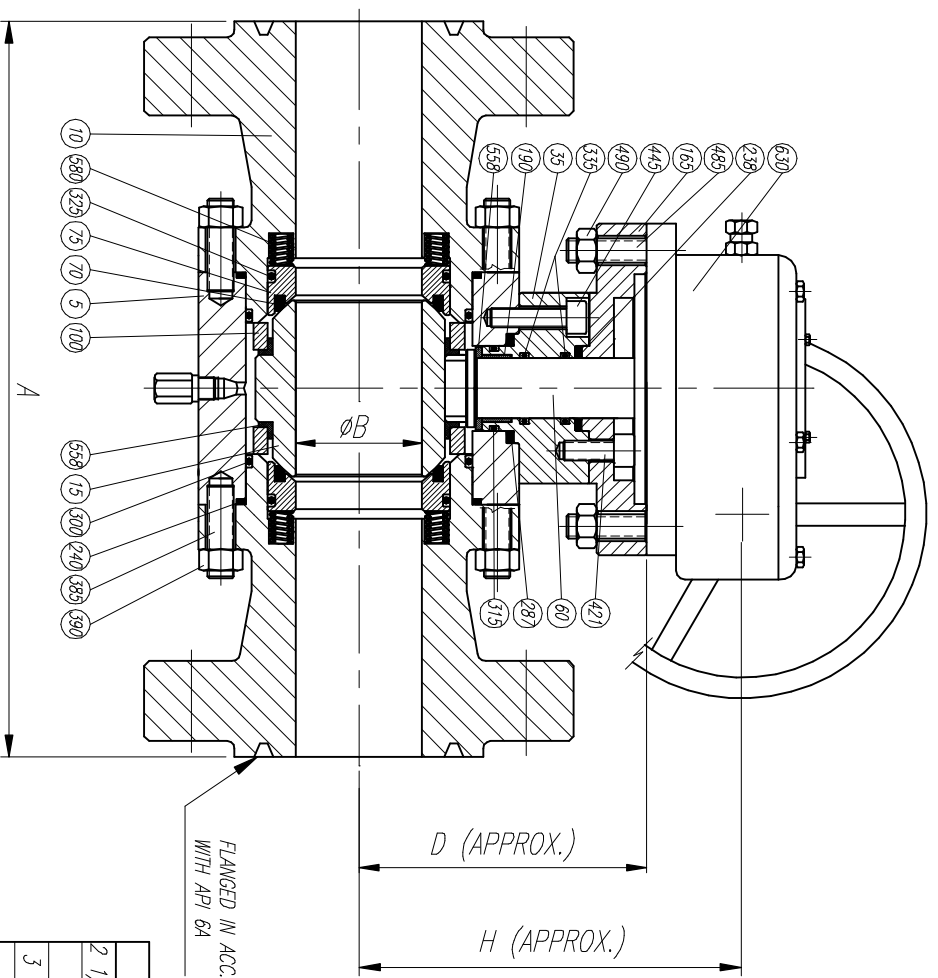


LIST OF MATERIALS

N°	Description	Material
5	BODY	A105
10	ADAPTOR	A105
15	BALL	A105 + ENP
35	UPPER BONNET	A105
60	STEM	A182 F6
70	SEAL	NYLON
75	SEAT CARRIER	A105 + ENP
100	BALL GUIDE	A105
165	SUPPORT FLANGE	A105
190	UPPER BEARING	DU-DRY
238	SUPPORT FLANGE GASKET	GRAPHITE
240	BODY ADAPTOR GASKET	GRAPHITE
287	UPPER BONNET GASKET	GRAPHITE
300	ADAPTOR "O" RING	VITON
315	UPPER BONNET "O" RING	VITON
325	SEAT CARRIER "O" RING	VITON
335	STEM "O" RING	VITON
365	BODY ADAPTOR STUD	A193 B7
390	BODY ADAPTOR STUD NUT	A194 2H
421	SUPPORT FLANGE BOLT	A193 B7
445	UPPER BONNET BOLT	A193 B7
485	ACTUATOR STUD	CARBON STEEL
490	ACTUATOR STUD NUT	CARBON STEEL
568	THRUST BEARING	DU-DRY
580	SEAT SPRING	INCONEL X750
630	ACTUATOR	COMMERCIAL

OTHERS MATERIALS AVAILABLE UPON REQUEST



SIZE	A-R/TU	ØB	ØC	D	D1	H	H1	L	ØM	WEIGHT
2 1/16"x1 13/16"	371	52.4	46	—	155	—	—	1000	—	45
2 1/16"	371	52.4	—	155	—	—	—	1000	—	55
3 1/8"x2 1/16"	473	79.3	52.4	—	155	—	—	1000	—	75
3 1/8"	473	79.3	—	155	—	210	—	700	—	135
4 1/16"x3 1/8"	549	103.2	79.3	—	—	—	210	—	700	160
4 1/16"	549	103.2	—	—	255	—	—	700	—	205
5 1/8"x4 1/16"	727	130	103.2	—	—	—	255	—	700	300
5 1/8"	727	130	—	—	—	320	—	700	—	560
7 1/16"x6"	737	179.4	152.4	—	—	—	320	—	700	630
7 1/16"	813	179.4	—	—	—	410	—	700	—	850

REV	Description	Drawn	Date	Title:

Drawn	JLO	Date	23/01/04	Gen Tol ± 0.4	Scale	Size	A3	Drawg No	BR50A2G	REV	0
Appr				Sheet 1 / 1							

		Description: GENERAL ASSEMBLY & LIST OF MATERIALS Detail: BALL VALVE Title: 5000# API 6A	
--	--	------------------------------------------------------------------------------------------------	--