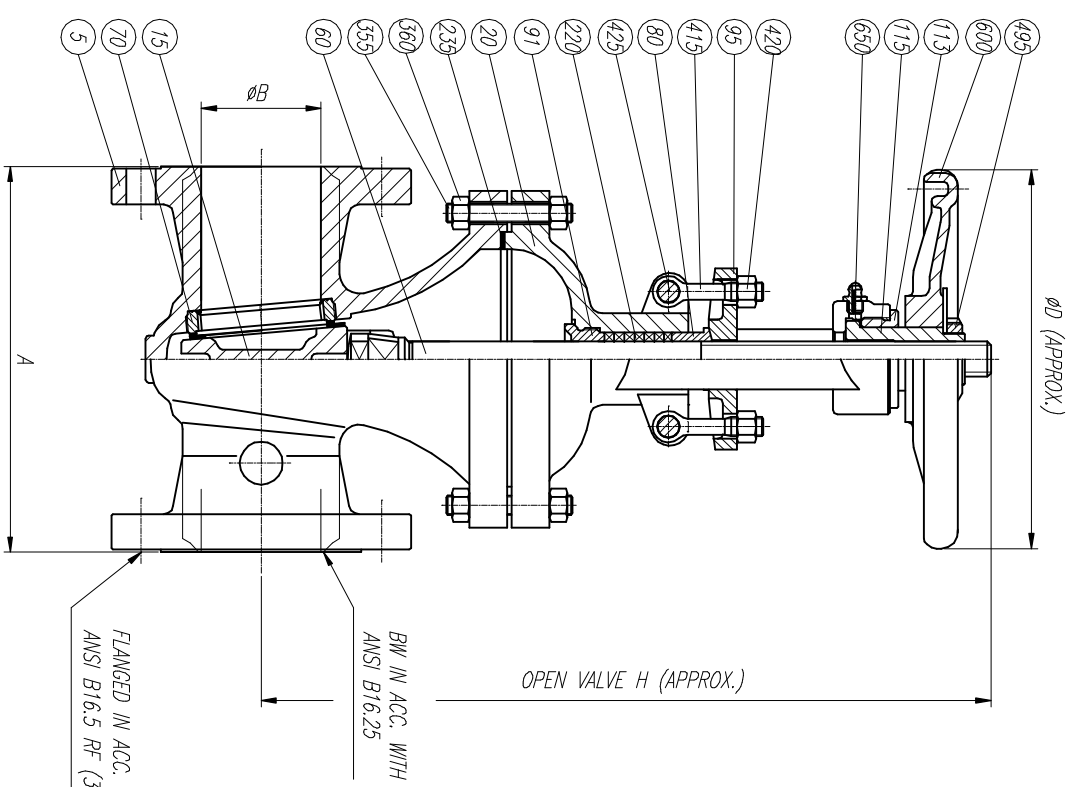
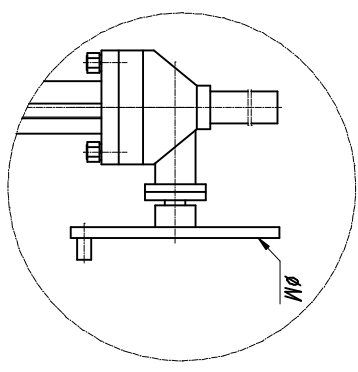


ELECTRICAL AND PNEUMATIC OPERATION UPON REQUEST



SIZE	A	ØB	Hmax	ØD	ØM	WEIGHT
1 1/2"	191	38.1	442	200	—	22
2"	216	50.8	460	200	—	27
2 1/2"	241	63.5	510	250	—	40
3"	282.4	76.2	550	250	—	47
4"	304.8	101.6	624	300	—	72
6"	403.4	152.4	840	350	—	140
8"	419.1	203.2	1043	450	—	225
10"	457.2	254	1255	450	—	350
12"	501.7	304.8	1459	500	—	580
14"	562	356.6	1626	600	—	710
16"	638.2	397.4	1856	—	460	1070
18"	914.4	432	2045	—	460	1230
20"	990.6	483	2255	—	600	1650
24"	1143	584	2685	—	600	2320
28"	1346.2	686	3100	—	1000	3900
30"	1397	737	3320	—	1000	4950
36"	1727.2	876	3890	—	1000	6900
40"	1955.8	977.9	4340	—	1000	8100
42"	2032	1022.3	4580	—	1200	9750
48"	2286	1168.4	5320	—	1200	13050

POS.	DESCRIPTION
5	BODY
15	WEDGE
20	BONNET-YOKE
60	STEM
70	SEAT RING
80	GLAND
91	BACK SEAT
95	GLAND FLANGE
113	BONNET UPPER NUT
115	YOKE SLEEVE
220	PACKING
235	BODY BONNET GASKET
355	BODY BONNET STUD
360	BODY BONNET STUD NUT
415	EYEBOLT
420	EYEBOLT NUT
425	EYEBOLT BOLT
495	HANDWHEEL NUT
600	HANDWHEEL
650	GREASE FITTING

REV	Description	Drawn	Date	Approved	Date

		Title: GATE VALVE 300#	
Description: GENERAL ASSEMBLY & LIST OF MATERIALS	Detail: Sheet 1 / 1	Drawn: JLO	Date: 1/10/03
Gen Tol: ±0.4	Escala:	Size: A3	Drwg No.: CRO342
Approved:		REV: 0	Date: