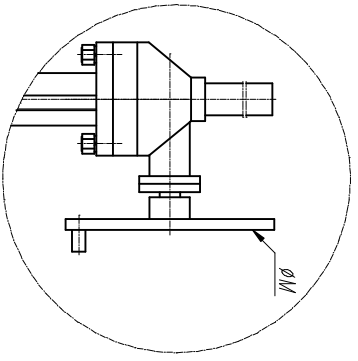
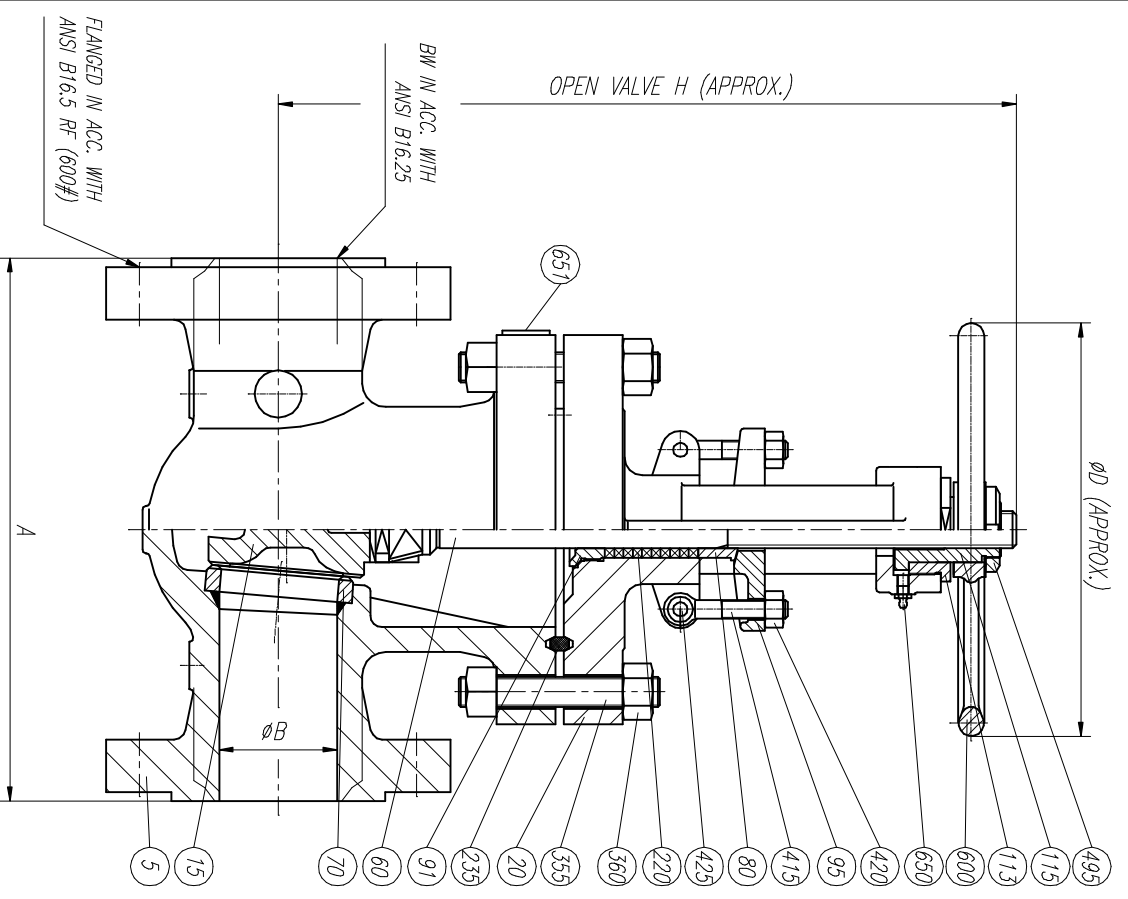


ELECTRICAL AND PNEUMATIC OPERATION UPON REQUEST



SIZE	A	ØB	Hmax	ØD	ØM	WEIGHT
1 1/2"	241	38.1	420	200	—	30
2"	292	50.8	440	200	—	37
2 1/2"	330	63.5	543	250	—	60
3"	356	76.2	567	300	—	80
4"	432	101.6	677	350	—	140
6"	559	152.4	894	450	—	285
8"	660.4	200.2	1085	500	—	460
10"	787.4	247.7	1277	700	—	730
12"	838.2	298.5	1505	800	—	980
14"	889.0	327.2	1662	800	—	1380
16"	990.6	374.7	1934	—	600	1825
18"	1092.2	419.1	2092	—	1000	2350
20"	1193.8	463.6	2350	—	1000	2800
24"	1397	558.8	2795	—	1000	3900
28"	1549.4	647.7	3180	—	1000	6700
30"	1651.0	695.2	3685	—	1000	8000
36"	2082.8	857.2	3998	—	1000	9400
40"	2149.8	977.9	4240	—	1000	13500
42"	2260.6	1022.3	4620	—	1000	16500
48"	2667	1168.4	5450	—	1000	23000

LIST OF MATERIALS

POS.	DESCRIPTION
5	BODY
15	WEDGE
20	BONNET
60	STEM
70	SEAT RING
80	GLAND
91	BACKSEAT
95	GLAND FLANGE
113	BONNET UPPER NUT
115	YOKE SLEEVE
220	PACKING
235	BODY BONNET GASKET
355	BODY BONNET STUD
360	BODY BONNET STUD NUT
415	EYEBOLT
420	EYEBOLT NUT
425	EYEBOLT BOLT
495	HANDWHEEL NUT
600	HANDWHEEL
650	GREASE FITTING
651	NAMEPLATE

REV	Description	Drawn	Date	Approved	Date

		Description: GATE VALVE 600#	
Title: GENERAL ASSEMBLY & LIST OF MATERIALS		Detail:	
Drawn	JLO	Date	1/10/03
Approved		Date	1/10/03
Gen Tol ±0.4		Escala	
Sheet 1 / 1		Size A3	
Drwg No. CR06A2		REV 0	