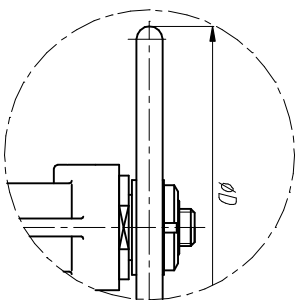
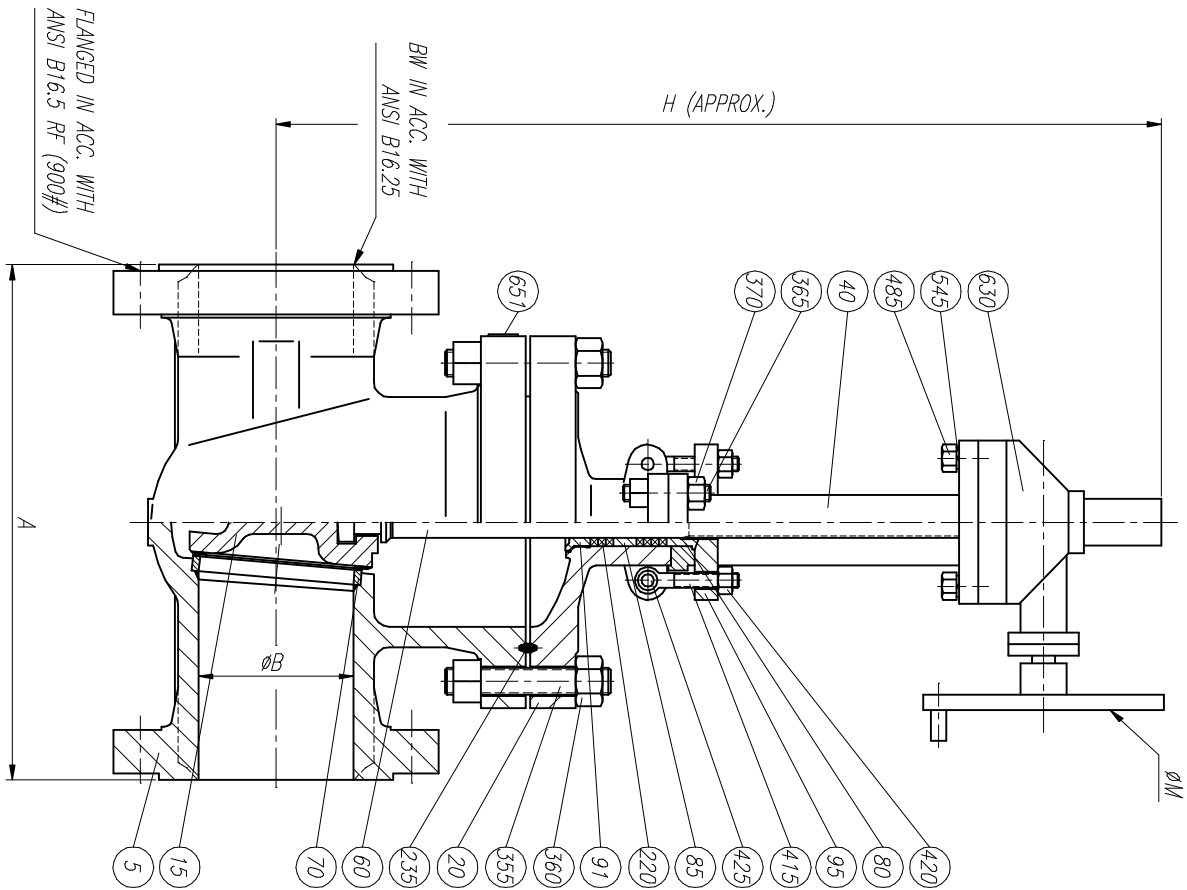


ELECTRICAL AND PNEUMATIC OPERATION UPON REQUEST



SIZE	A	ØB	H	ØD	ØM	WEIGHT
2"	368.3	51	455	300	—	80
3"	381	73	528	350	—	100
4"	457.2	98	591	450	—	140
6"	609.6	146	1045	—	460	300
8"	736.6	191	1250	—	460	525
10"	838.2	238	1460	—	600	950
12"	965.2	283	1660	—	600	1400
14"	1028.7	311	1850	—	600	1800
16"	1130.3	356	2080	—	600	2400
18"	1219.2	400	2232	—	800	3000
20"	1320.8	445	2435	—	800	3800
24"	1594.4	533	2865	—	800	6500

POS.	DESCRIPTION
5	BODY
15	WEDGE
20	BONNET
40	YOKE
60	STEM
70	SEAT RING
80	GLAND
85	LANTERN RING
91	BACKSEAT
95	GLAND FLANGE
220	PACKING
235	BODY BONNET GASKET
355	BODY BONNET STUD
360	BODY BONNET STUD NUT
365	BONNET YOKE BOLT
370	BONNET YOKE BOLT NUT
415	EYEBOLT
420	EYEBOLT NUT
425	EYEBOLT BOLT
485	ACTUATOR BOLT
545	ACTUATOR BOLT WASHER
630	ACTUATOR
651	NAMEPLATE

REV	Description	Drawn	Date	Approved	Date

		Description GATE VALVE 900#	
Title: GENERAL ASSEMBLY & LIST OF MATERIALS		Detail: Gen Tol ±0.4 Sheet 1 / 1	
Drawn	JLO	Date	1/10/03
Approved		Date	1/10/03
Size	A3	Drwg No.	CR0942
REV	0		