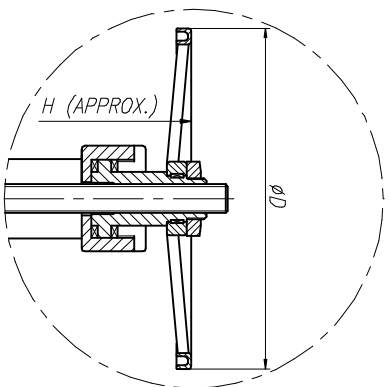
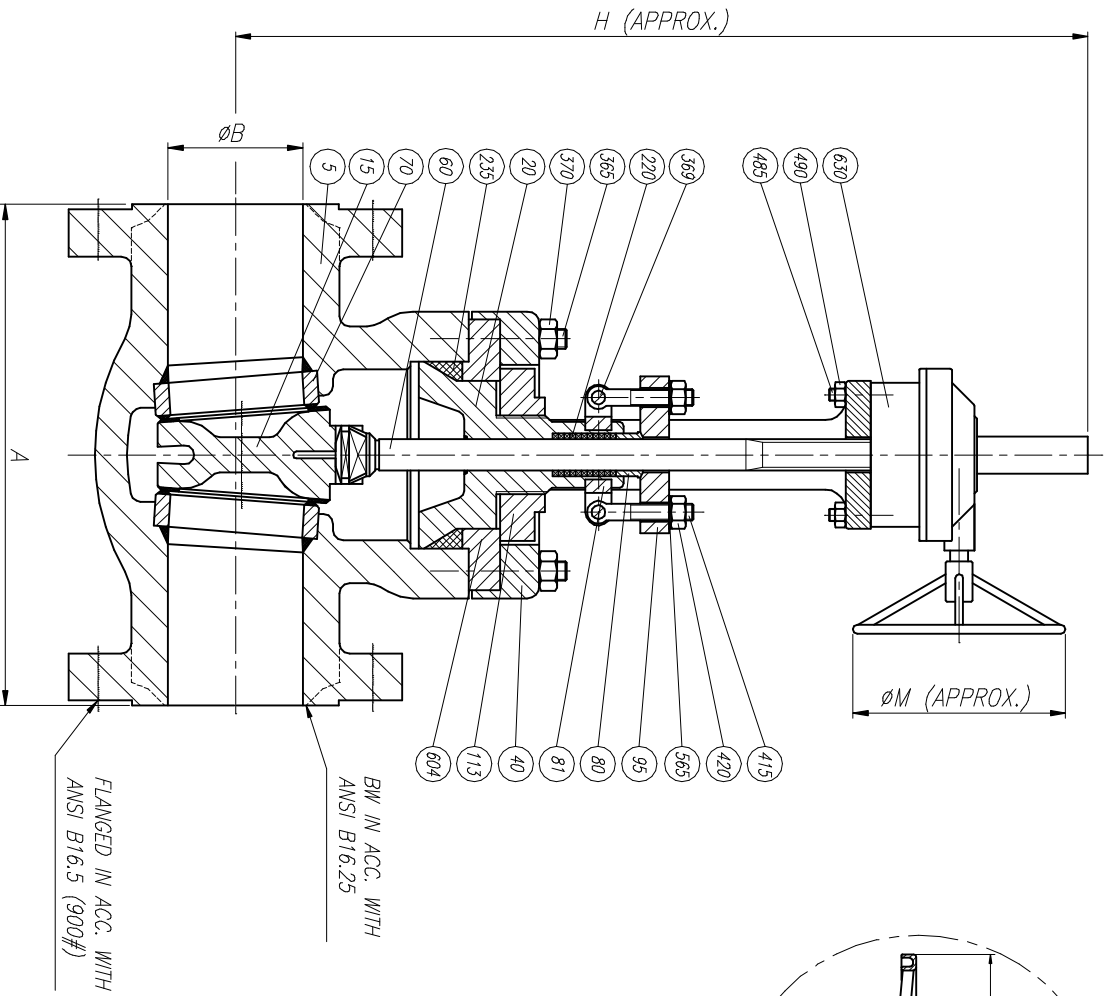


ELECTRICAL AND PNEUMATIC OPERATION UPON REQUEST



**LIST OF MATERIALS**

POS.	DESCRIPTION
5	BODY
15	WEDGE
20	BONNET
40	YOKE
60	STEM
70	SEAT RING
80	GLAND
81	EYEBOLT CARRIER
95	GLAND FLANGE
113	BONNET SUECTION NUT
150	WEDGE GUIDE
220	PACKING
235	BODY BONNET GASKET
365	BODY YOKE STUD
369	EYEBOLT CARRIER BOLT
370	BODY YOKE STUD NUT
415	EYEBOLT
420	EYEBOLT NUT
485	ACTUATOR STUD
490	ACTUATOR STUD NUT
565	EYEBOLT WASHER
604	SUECTION GASKET PLATE
630	ACTUATOR

SIZE	A(RF)	A(BW)	phi B	Hmax	phi D	phi M	WEIGHT
3"	381	304	72.9	660	350	—	95
4"	457	355	98.2	825	350	—	130
6"	609	508	146	1015	600	—	280
8"	736	660	190.5	1225	600	—	460
10"	838	787	238	1435	700	—	820
12"	965	914	282.4	1625	700	—	1150
14"	1028	990	311.1	1915	850	—	1500
16"	1130	1092	355.6	2160	—	750	2100
18"	1219	1219	400	2380	—	750	2750
20"	1320	1320	444.5	2450	—	750	3400
24"	1549	1549	533.4	2970	—	900	4400
28"	1663	1663	622.3	3700	—	900	6900

REV	Description	Drawn	Date	Appr	Date

Drwn	JLO	Date	26/03/04	Gen Tol	± 0.4	Scale	A3	Size		Drwg No	CR09PS2	REV	0
Appr				Sheet	1 / 1								

		Description Detail GENERAL ASSEMBLY & LIST OF MATERIALS		Title: GATE VALVE P. SEAL 900#	
--	--	--	--	--------------------------------------	--