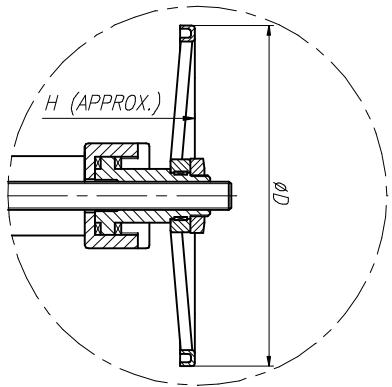
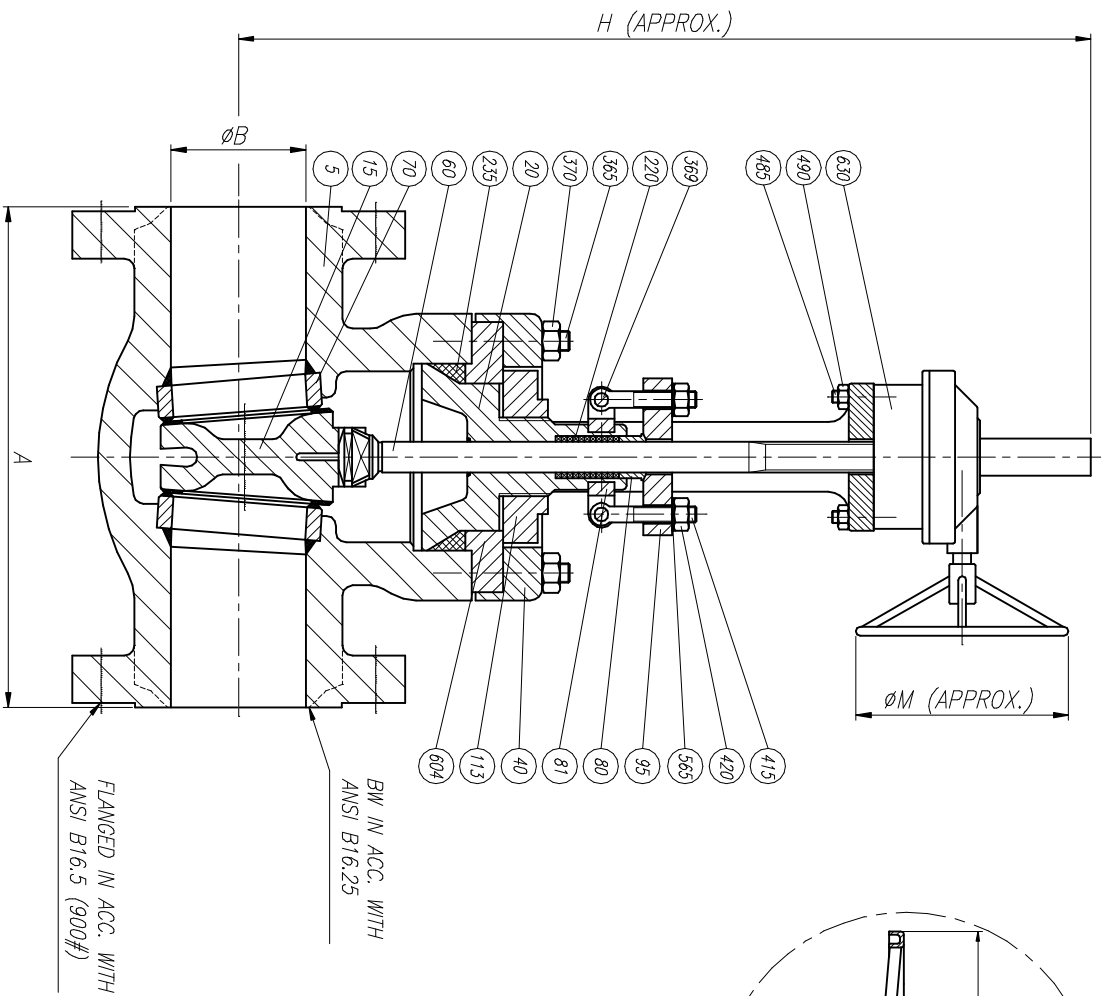


ELECTRICAL AND PNEUMATIC OPERATION UPON REQUEST



LIST OF MATERIALS

POS.	DESCRIPTION
5	BODY
15	WEDGE
20	BONNET
40	YOKER
60	STEM
70	SEAT RING
80	GLAND
81	EYEBOLT CARRIER
95	GLAND FLANGE
113	BONNET SUCTION NUT
150	WEDGE GUIDE
220	PACKING
235	BODY BONNET GASKET
365	BODY YOKER STUD
369	EYEBOLT CARRIER BOLT
370	BODY YOKER STUD NUT
415	EYEBOLT
420	EYEBOLT NUT
485	ACTUATOR STUD
490	ACTUATOR STUD NUT
565	EYEBOLT WASHER
604	SUCTION GASKET PLATE
630	ACTUATOR

SIZE	A(R)	A(BW)	ØB	Hmax	ØD	ØM	WEIGHT
3"	469	304	69.8	740	350	—	110
4"	546	406	91.9	835	450	—	180
6"	704	558	136.4	1055	600	—	370
8"	831	711	177.8	1425	700	—	610
10"	990	863	222.2	1715	850	—	1300
12"	1130	990	263.3	1900	—	750	2000
14"	1257	1066	288.7	1980	—	750	2900
16"	1384	1193	330.2	2110	—	750	3490
18"	1536	1346	371.3	2210	—	850	4000
20"	1663	1473	415.7	2390	—	850	4800
24"	1943	1943	498.3	2800	—	900	7500
28"	2209	2209	584.2	3400	—	900	10000

REV	Description	Drawn	Date	Appr	Date

Drawn	Description		Detail	Title	Drawn	Date	Appr	Date

Drawn	JLO	Date	26/03/04	Gen Tol ± 0.4	Scale	Size	A3	Drawg No	CR15PS2	REV	0
Appr				Sheet 1 / 1							

		GENERAL ASSEMBLY & LIST OF MATERIALS		GATE VALVE P. SEAL 1500#	
--	--	---	--	---------------------------------	--