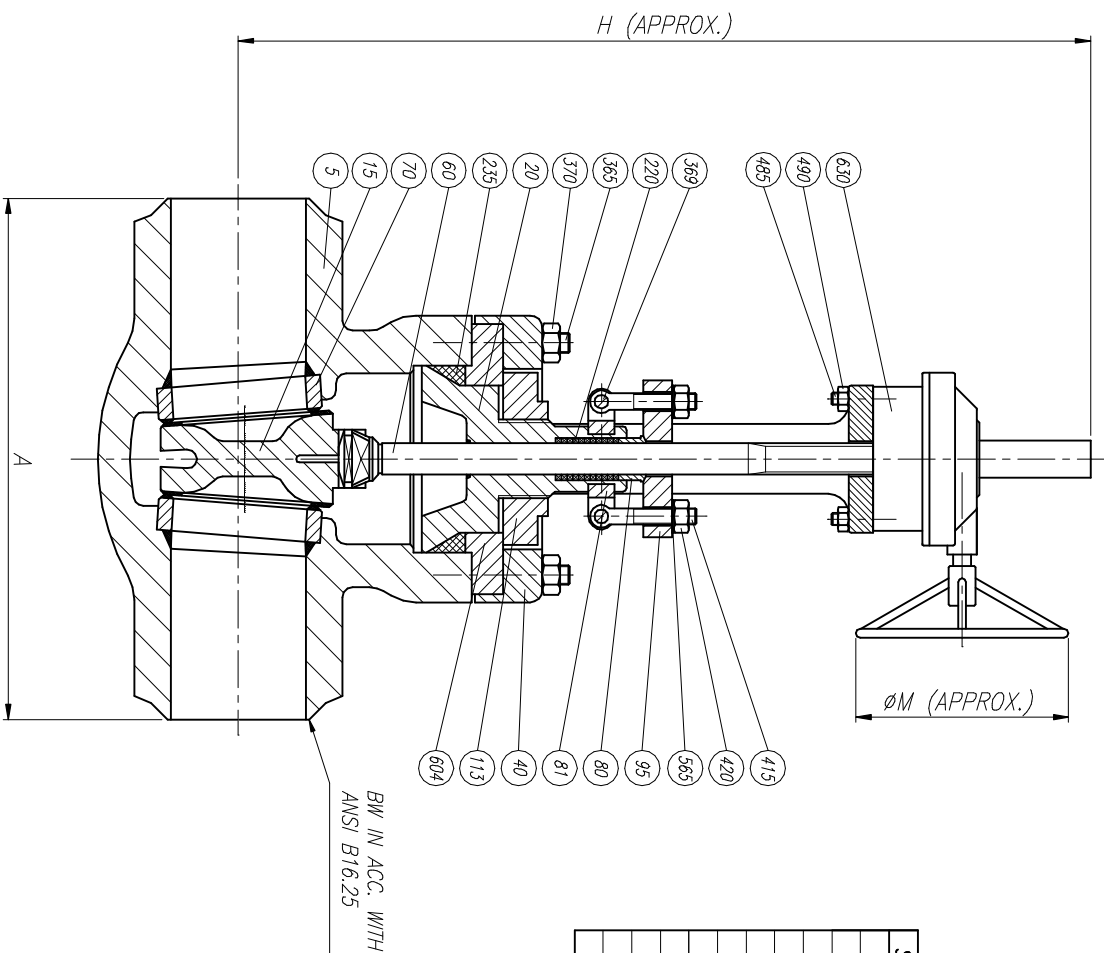


ELECTRICAL AND PNEUMATIC OPERATION UPON REQUEST



SIZE	A(BW)	Hmax	ØM	WEIGHT
3"	460	1050	600	175
4"	510	1160	600	250
6"	609	1330	600	700
8"	863	1830	900	1650
10"	965	1980	900	1990
12"	1041	2050	900	2300
14"	1143	2150	900	2890
16"	1270	2300	900	3450
18"	1397	2375	900	4680
20"	1575	2510	900	6200
24"	1752	2800	900	10170

LIST OF MATERIALS	
POS.	DESCRIPTION
5	BODY
15	WEDGE
20	BONNET
40	YOKE
60	STEM
70	SEAT RING
80	GLAND
81	EYEBOLT CARRIER
95	GLAND FLANGE
113	BONNET SUECTION NUT
150	WEDGE GUIDE
220	PACKING
235	BODY BONNET GASKET
365	BODY YOKE STUD
369	EYEBOLT CARRIER BOLT
370	BODY YOKE STUD NUT
415	EYEBOLT
420	EYEBOLT NUT
485	ACTUATOR STUD
490	ACTUATOR STUD NUT
565	EYEBOLT WASHER
604	SUECTION GASKET PLATE
630	ACTUATOR

REV	Description	Drawn	Date	Appr	Date

	RINGO VALVULAS GENERAL ASSEMBLY & LIST OF MATERIALS	Title: GATE VALVE P. SEAL 4500#	Drawn	Date	Appr	Date
Drawn: JL0 Date: 26/03/04 Sheet 1 / 1 Scale: AS	Gen Tol ± 0.4 Scale: AS	Size: A3 Drwg No: CR45PS2	REV: 0			